

SPRING MOUNTAIN RANCHETTES

TAXING UNIT: 36

PREFIX 22-026-

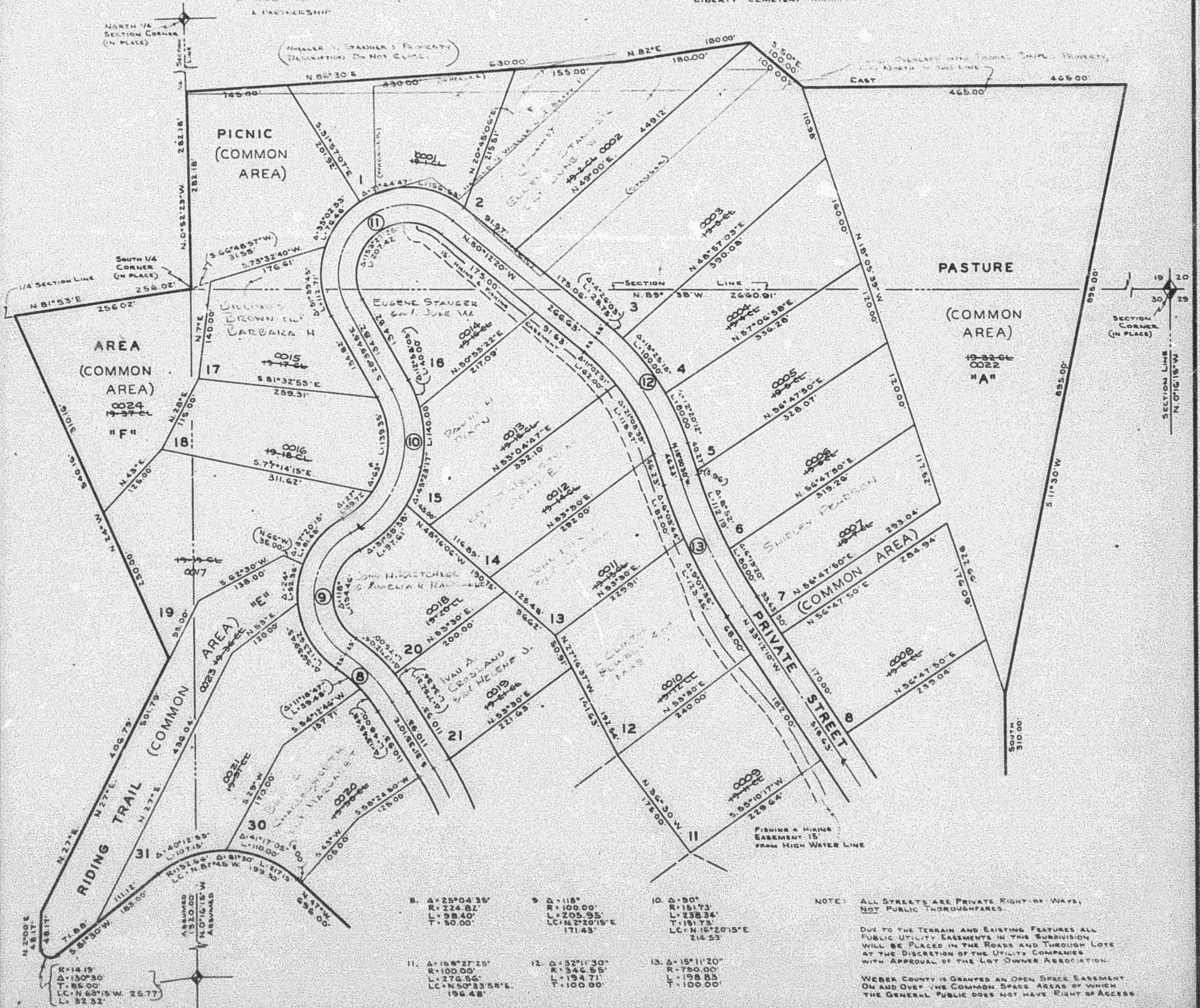
LOTS 1-8, 11-21, 30, 31, A, E & F

LIBERTY DISTRICT

SCALE 1"=100"

EXCEPT WHERE OTHERWISE SHOWN
ALL LOTS ARE OWNED BY:
SPRING MOUNTAIN RANCH,
A PARTNERSHIP

LIBERTY CEMETERY MAINTENANCE DISTRICT



- 8. $\Delta = 25^{\circ}04'35''$
R = 224.82'
L = 98.40'
T = 50.00'
- 9. $\Delta = 118^{\circ}$
R = 100.00'
L = 205.95'
LC = N 2^{\circ}20'15" E
171.43'
- 10. $\Delta = 50^{\circ}$
R = 151.73'
L = 238.34'
T = 151.73'
LC = N 16^{\circ}20'15" E
214.53'
- 11. $\Delta = 108^{\circ}27'25''$
R = 100.00'
L = 276.56'
LC = N 50^{\circ}33'55" E
196.48'
- 12. $\Delta = 32^{\circ}1'30''$
R = 346.55'
L = 194.71'
T = 100.00'
- 13. $\Delta = 15^{\circ}11'20''$
R = 750.00'
L = 198.85'
T = 100.00'

NOTE: ALL STREETS ARE PRIVATE RIGHTS-OF-WAY,
NOT PUBLIC THOROUGHFARES.

DUE TO THE TERRAIN AND EXISTING FEATURES ALL
PUBLIC UTILITY EASEMENTS IN THIS SUBDIVISION
WILL BE PLACED IN THE ROADS AND THROUGH LOTS
AT THE DISCRETION OF THE UTILITY COMPANIES
WITH APPROVAL OF THE LOT OWNER ASSOCIATION.

WEBER COUNTY IS GRANTED AN OPEN SPACE EASEMENT
ON AND OVER THE COMMON SPACE AREAS BY WHICH
THE GENERAL PUBLIC DOES NOT HAVE RIGHT OF ACCESS